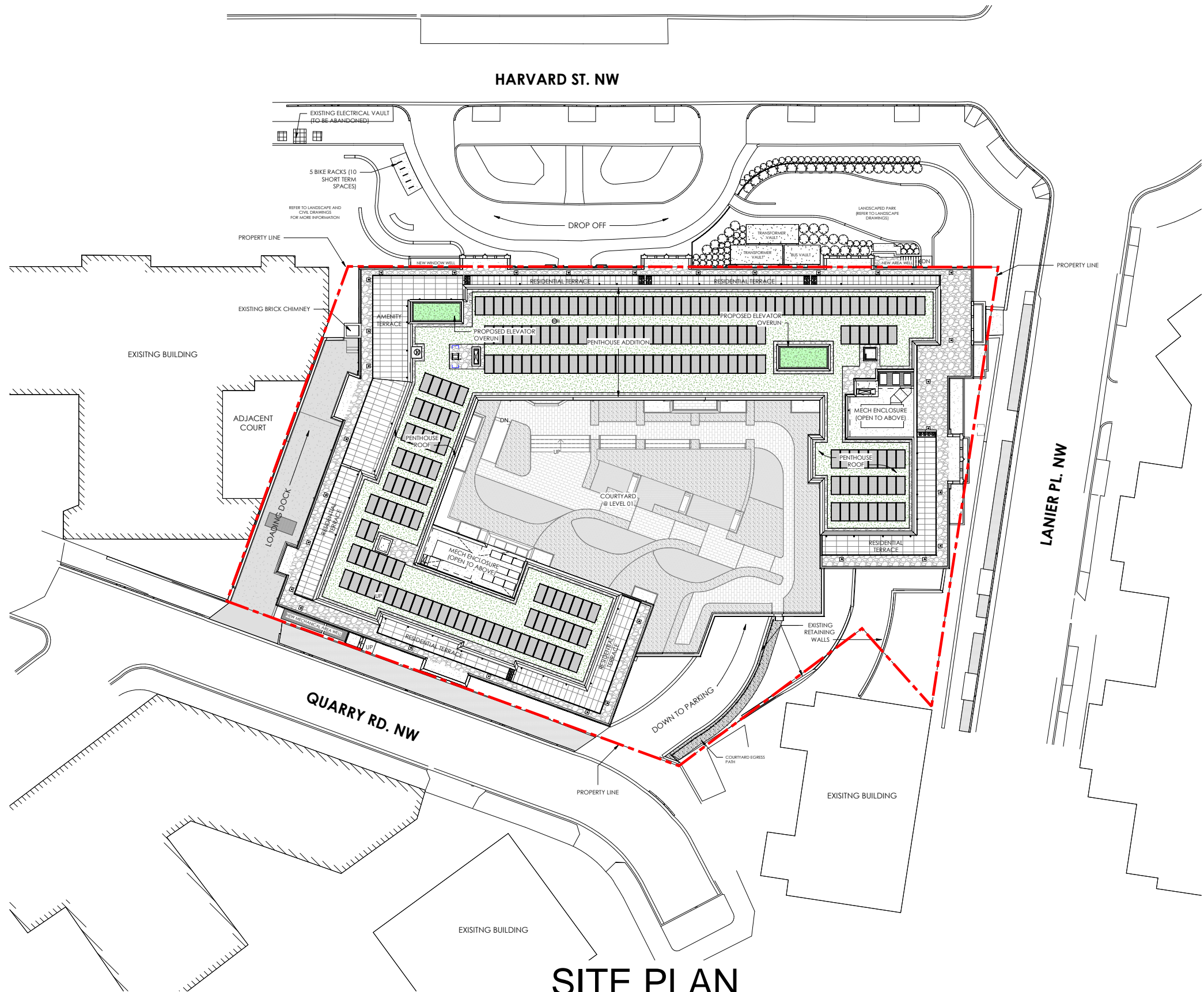


# HARVARD HALL APARTMENTS BZA SUBMISSION

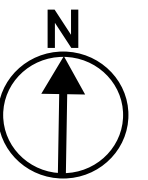
1650 HARVARD ST NW  
WASHINGTON DC 20009



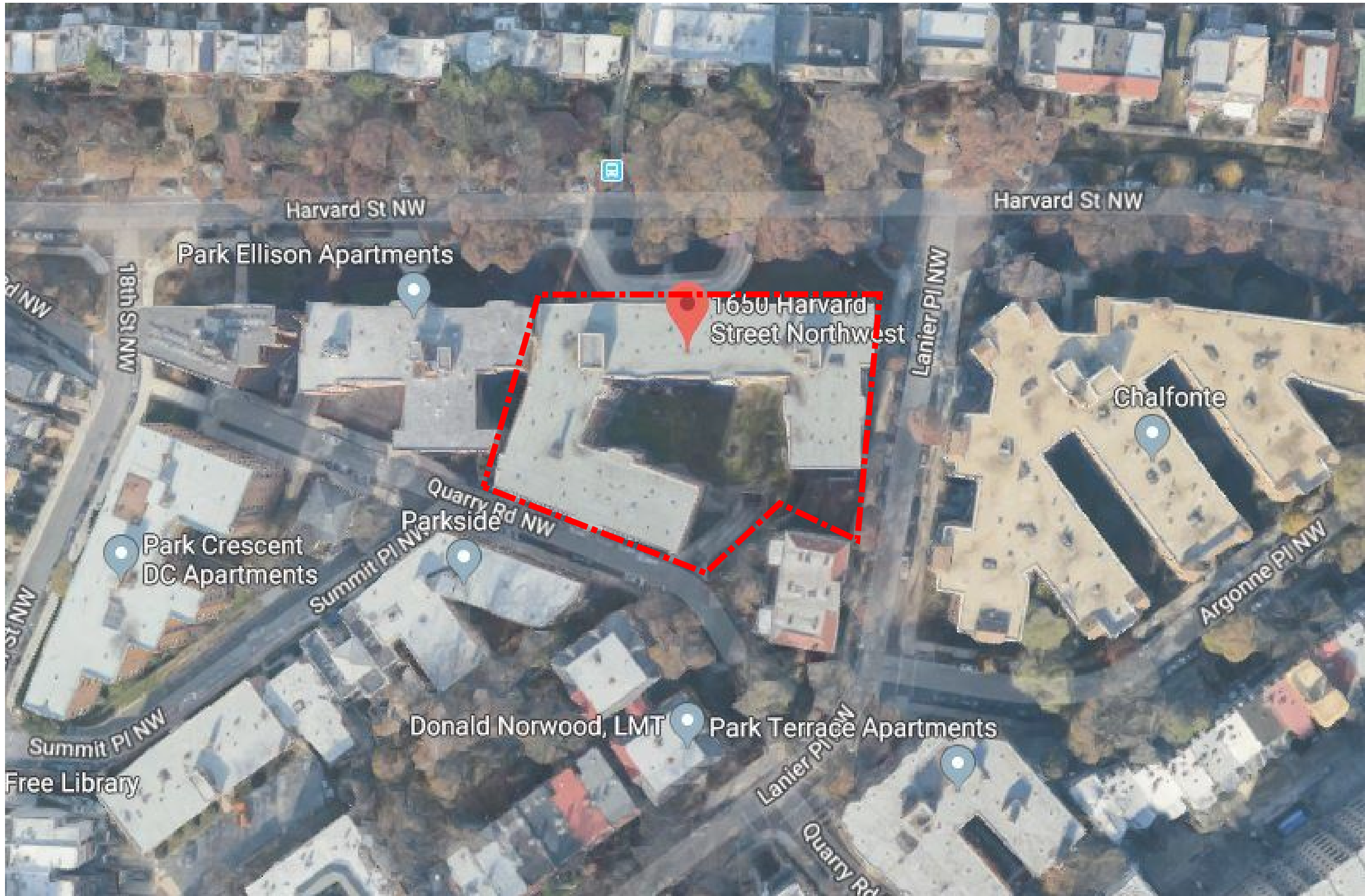
## VICINITY MAP



# SITE PLAN



SCALE 1" = 40'

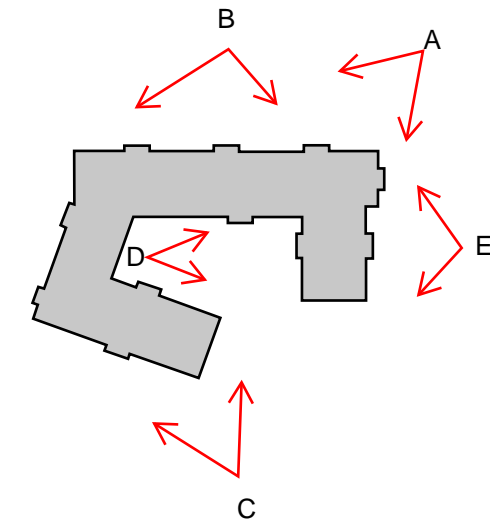


### SATELITE MAP

A - VIEW FROM HARVARD AND LANIER



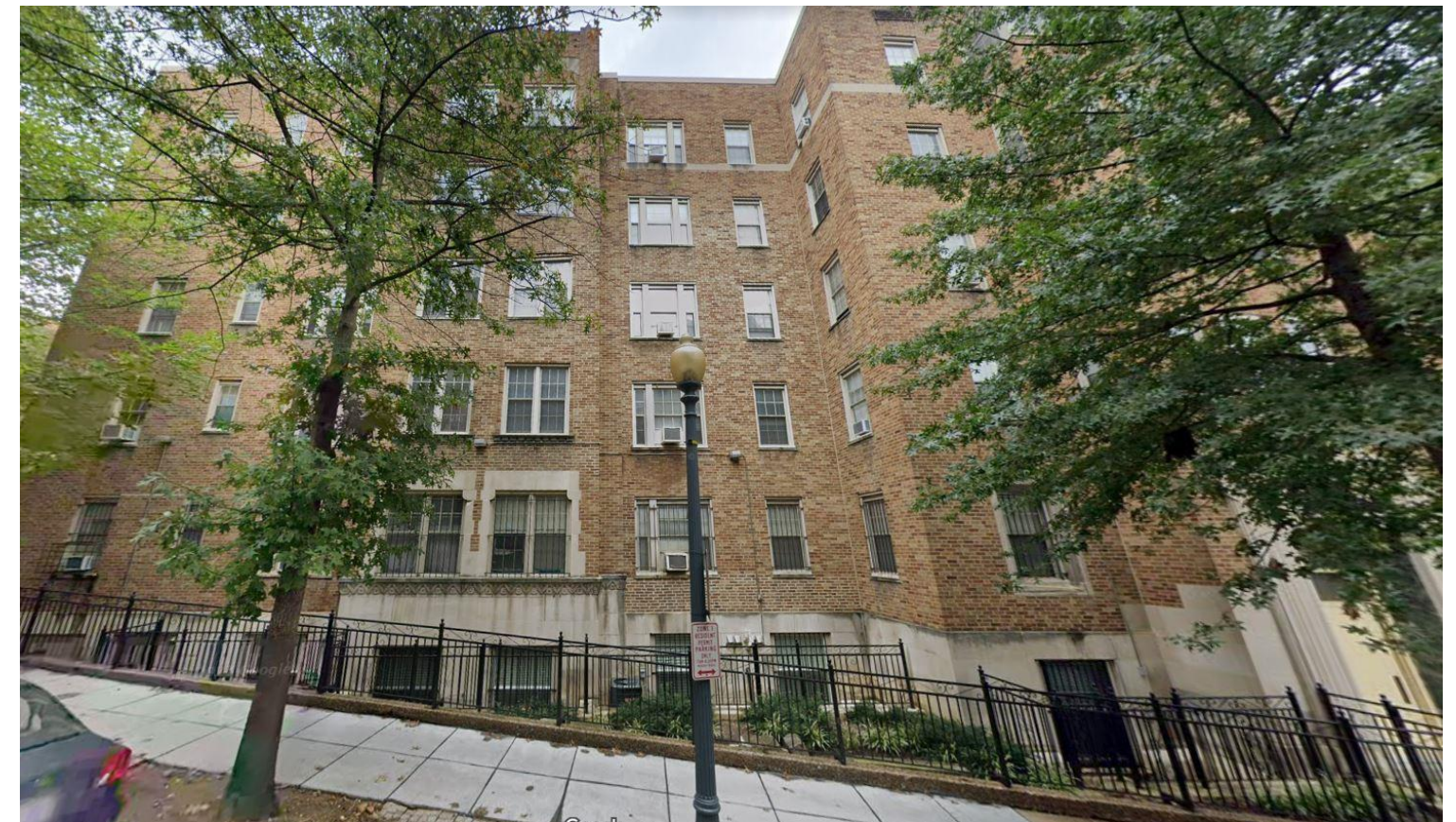
B - VIEW FROM HARVARD ST



C - VIEW FROM QUARRY RD



D - INTERIOR COURTYARD



E - VIEW FROM LANIER PLACE